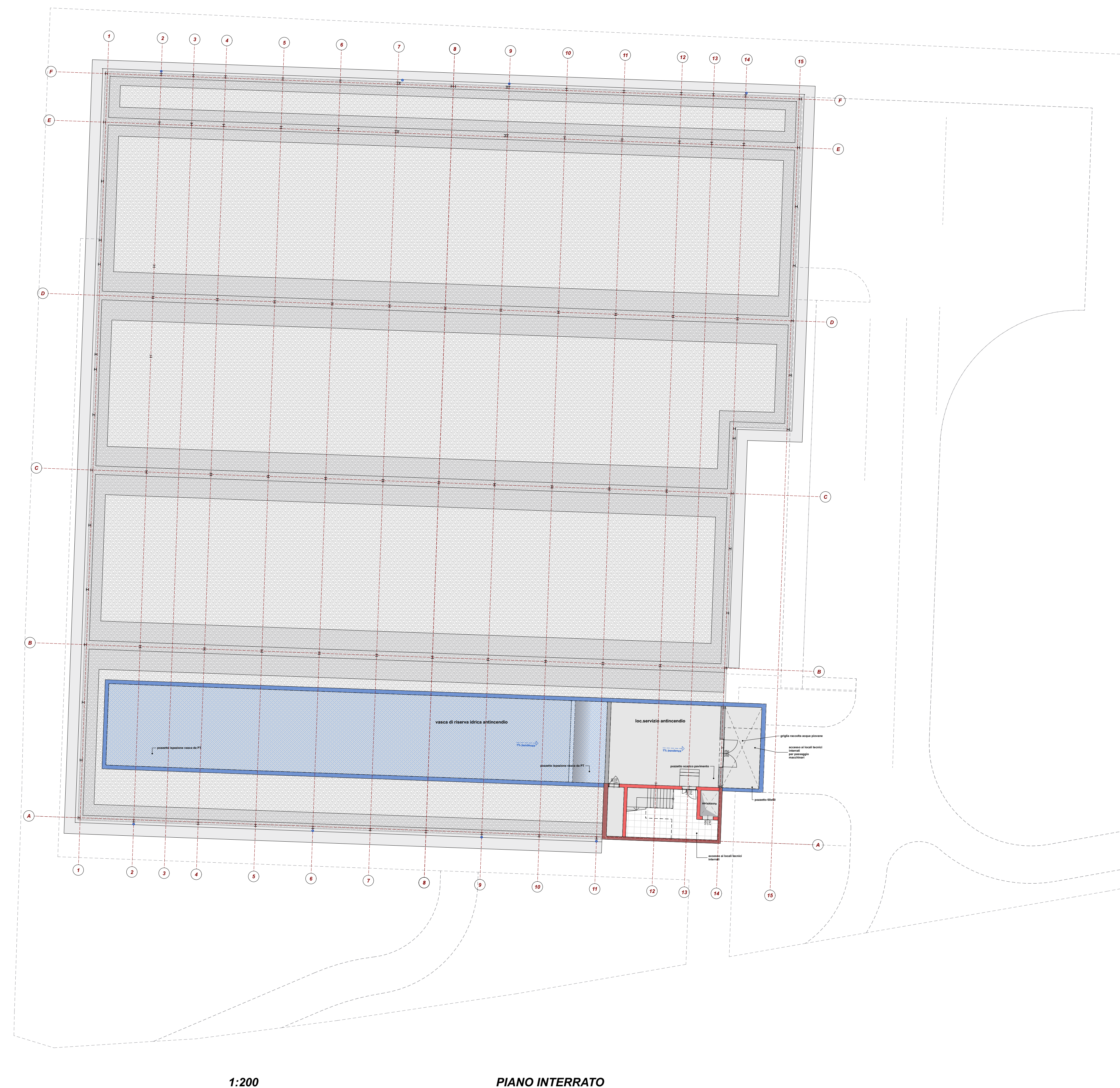
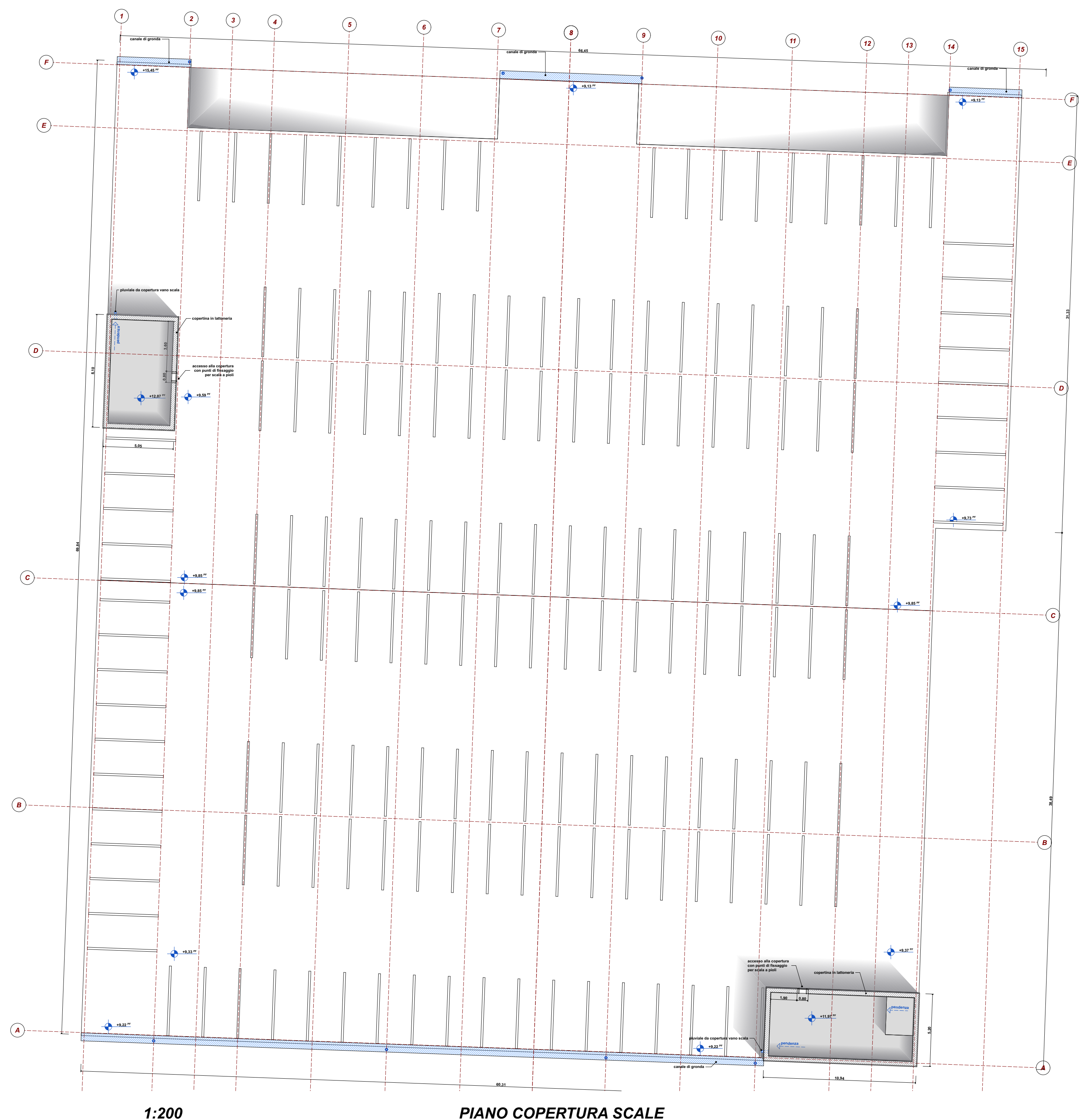


PARCHEGGI PERTINENZIALI	PIANO PRIMO	PARCHEGGI AUTO	155
	PIANO SECONDO	PARCHEGGI AUTO	155
	PIANO TERZO	PARCHEGGI AUTO	160
	TOTALE PARCHEGGI AUTO PERTINENZIALI		470
PARCHEGGI AUTO TOTALI			607



PARCHEGGIO MULTIPIANO - SUPERFICIE TOTALE				
Piano	Nome zona relativo	Anteprima	Destinazione d'uso	Area
<b>PIANO INTERNO</b>				
	LOCALI A SERVIZIO		CAVEDIO PER MANUTENZIONE	18,97
	LOCALI A SERVIZIO		CISTERNA ANTINCENDIO	353,47
	LOCALI A SERVIZIO		CORRIDOIO	16,71
	LOCALI A SERVIZIO		LOCALE TECNICO	6,89
	LOCALI A SERVIZIO		LOCALI SERVIZIO ANTINCENDIO	77,89
	LOCALI A SERVIZIO		SCALA	17,25
<b>PIANO TERRA</b>				
	LOCALI A SERVIZIO		ANTIBAGNO	6,41
	LOCALI A SERVIZIO		CAVEDIO TECNICO	32,07
	LOCALI A SERVIZIO		SCALA	15,96
	LOCALI A SERVIZIO		SCALA INGRESSO	32,93
	LOCALI A SERVIZIO		UFFICIO	14,26
	LOCALI A SERVIZIO		WC	5,18
	PARCHEGGI CESSIONE		CORSIA	1.904,14
	PARCHEGGI CESSIONE		PARCHEGGIO BICICLETTE	200,00
	PARCHEGGI CESSIONE		STALLI AUTO	1.812,26
	PARCHEGGI CESSIONE		STALLI AUTO PER RICARICA	175,49
	PARCHEGGI CESSIONE		STRADA	1.300,60
	PARCHEGGI PERTINENZIALI		CORSIA	68,35
	PARCHEGGI PERTINENZIALI		RAMPA	214,15
<b>PIANO PRIMO</b>				
	LOCALI A SERVIZIO		CAVEDIO TECNICO	6,89
	LOCALI A SERVIZIO		CORRIDOIO	30,85
	PARCHEGGI PERTINENZIALI		CORSIA	2.008,79
	PARCHEGGI PERTINENZIALI		RAMPA	214,15
	PARCHEGGI PERTINENZIALI		STALLI AUTO	2.016,08
<b>PIANO SECONDO</b>				
	LOCALI A SERVIZIO		CAVEDIO TECNICO	6,89
	LOCALI A SERVIZIO		CORRIDOIO	31,38
	PARCHEGGI PERTINENZIALI		CORSIA	2.008,95
	PARCHEGGI PERTINENZIALI		RAMPA	214,15
	PARCHEGGI PERTINENZIALI		STALLI AUTO	2.015,96
<b>PIANO TERZO</b>				
	LOCALI A SERVIZIO		CAVEDIO TECNICO	6,89
	LOCALI A SERVIZIO		CORRIDOIO	31,77
	PARCHEGGI PERTINENZIALI		CORSIA	1.864,33
	PARCHEGGI PERTINENZIALI		STALLI AUTO	2.114,32
<b>TOTALE MQ PARCHEGGIO MULTIPIANO</b>				<b>18.844,36 m²</b>

NB - la quota parte del Fotovoltaico necessaria per il rispetto della normativa sarà assorbita dalla maggiore superficie in copertura del fabbricato "Q" Zoox

INNOVATIVE SOLUTIONS srl C.so Garibaldi, 10 41122 Modena (MO) INTECHNO CHEMICAL ADVANCED MATERIALS srl Piazza Della Resistenza, 1 41121 Modena (MO) C.F. 02470040366 Via Del Tirocinio, 55 41122 Modena (MO)		ENTE:  <b>Comune di Modena</b>		
<b>AMPLIAMENTO DEL COMPARTO INDUSTRIALE PRODOTTO CPC-MCAM AI SENSI DELL'ART. 53 DELLA L.R. 24/2017 - REALIZZAZIONE DI NUOVO PARCHEGGIO MULTIPIANO -</b>				
<b>PROCEDIMENTO UNICO L.R. 24/2017 ART. 53</b>				
				
FASC. FABBR. DISCIPLINA. PROIE. REVISIONE.		FABBRICATO		
PAGE	MP	A	02.02 rev01	MP
OGGETTO: <b>STATO DI PROGETTO</b>				
<b>PIANO INTERRATO E PIANI SUPERIORI</b>				
FILE PDF: <a href="#">FILE_PDF_01_02_03_04_05_06_07_08_09_10_11_12_13_14_15_16_17_18_19_20_21_22_23_24_25_26_27_28_29_30_31_32_33_34_35_36_37_38_39_40_41_42_43_44_45_46_47_48_49_50_51_52_53_54_55_56_57_58_59_60_61_62_63_64_65_66_67_68_69_70_71_72_73_74_75_76_77_78_79_80_81_82_83_84_85_86_87_88_89_90_91_92_93_94_95_96_97_98_99_100_101_102_103_104_105_106_107_108_109_110_111_112_113_114_115_116_117_118_119_120_121_122_123_124_125_126_127_128_129_130_131_132_133_134_135_136_137_138_139_140_141_142_143_144_145_146_147_148_149_150_151_152_153_154_155_156_157_158_159_160_161_162_163_164_165_166_167_168_169_170_171_172_173_174_175_176_177_178_179_180_181_182_183_184_185_186_187_188_189_190_191_192_193_194_195_196_197_198_199_200_201_202_203_204_205_206_207_208_209_210_211_212_213_214_215_216_217_218_219_220_221_222_223_224_225_226_227_228_229_230_231_232_233_234_235_236_237_238_239_240_241_242_243_244_245_246_247_248_249_250_251_252_253_254_255_256_257_258_259_260_261_262_263_264_265_266_267_268_269_270_271_272_273_274_275_276_277_278_279_280_281_282_283_284_285_286_287_288_289_290_291_292_293_294_295_296_297_298_299_300_301_302_303_304_305_306_307_308_309_310_311_312_313_314_315_316_317_318_319_320_321_322_323_324_325_326_327_328_329_330_331_332_333_334_335_336_337_338_339_340_341_342_343_344_345_346_347_348_349_350_351_352_353_354_355_356_357_358_359_360_361_362_363_364_365_366_367_368_369_370_371_372_373_374_375_376_377_378_379_380_381_382_383_384_385_386_387_388_389_390_391_392_393_394_395_396_397_398_399_400_401_402_403_404_405_406_407_408_409_410_411_412_413_414_415_416_417_418_419_420_421_422_423_424_425_426_427_428_429_430_431_432_433_434_435_436_437_438_439_440_441_442_443_444_445_446_447_448_449_450_451_452_453_454_455_456_457_458_459_460_461_462_463_464_465_466_467_468_469_470_471_472_473_474_475_476_477_478_479_480_481_482_483_484_485_486_487_488_489_490_491_492_493_494_495_496_497_498_499_500_501_502_503_504_505_506_507_508_509_510_511_512_513_514_515_516_517_518_519_520_521_522_523_524_525_526_527_528_529_530_531_532_533_534_535_536_537_538_539_540_541_542_543_544_545_546_547_548_549_550_551_552_553_554_555_556_557_558_559_560_561_562_563_564_565_566_567_568_569_570_571_572_573_574_575_576_577_578_579_580_581_582_583_584_585_586_587_588_589_590_591_592_593_594_595_596_597_598_599_600_601_602_603_604_605_606_607_608_609_610_611_612_613_614_615_616_617_618_619_620_621_622_623_624_625_626_627_628_629_630_631_632_633_634_635_636_637_638_639_640_641_642_643_644_645_646_647_648_649_650_651_652_653_654_655_656_657_658_659_660_661_662_663_664_665_666_667_668_669_670_671_672_673_674_675_676_677_678_679_680_681_682_683_684_685_686_687_688_689_690_691_692_693_694_695_696_697_698_699_700_701_702_703_704_705_706_707_708_709_710_711_712_713_714_715_716_717_718_719_720_721_722_723_724_725_726_727_728_729_730_731_732_733_734_735_736_737_738_739_740_741_742_743_744_745_746_747_748_749_750_751_752_753_754_755_756_757_758_759_760_761_762_763_764_765_766_767_768_769_770_771_772_773_774_775_776_777_778_779_780_781_782_783_784_785_786_787_788_789_790_791_792_793_794_795_796_797_798_799_800_801_802_803_804_805_806_807_808_809_810_811_812_813_814_815_816_817_818_819_820_821_822_823_824_825_826_827_828_829_830_831_832_833_834_835_836_837_838_839_840_841_842_843_844_845_846_847_848_849_850_851_852_853_854_855_856_857_858_859_860_861_862_863_864_865_866_867_868_869_870_871_872_873_874_875_876_877_878_879_880_881_882_883_884_885_886_887_888_889_890_891_892_893_894_895_896_897_898_899_900_901_902_903_904_905_906_907_908_909_910_911_912_913_914_915_916_917_918_919_920_921_92</a>				